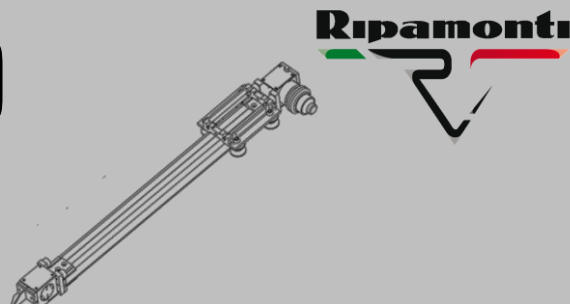


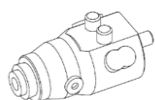
# SPEEDY DRILL 180 PNEUMATIC



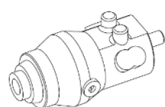
MODEL	STROKE(mm)	PULL BACK (Kg)	MAST LENGHT (mm)	WEIGHT (Kg)	AIR CONSUMP. (l/min)
SDP/1300	1.300	900	2300	75	2000
SDP/1800	1.800	900	2800	82	2000
SDP/2300	2.300	900	3300	89	2000
SDP/2800	2.800	900	3800	96	2000

## ROTARY HEADS

MPL- 22/007	
Weight	31 Kg
R.P.M	0-60
Thread	RD 40
Torque	80 Kgm
Air consum.	2200 l/min



MPL- 22/005	
Weight	42 Kg
R.P.M	0-50
Thread	RD 50
Torque	105 Kgm
Air consum.	2200 l/min

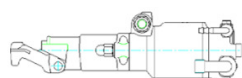


PN%00	
Weight	42 Kg
R.P.M	0-50
Thread	RD 50
Torque	105 Kgm
Air consum.	2200 l/min

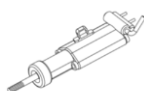


## DRIFTERS

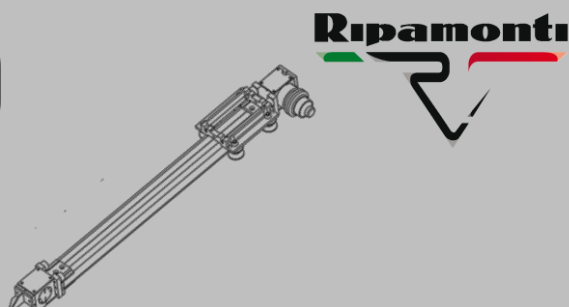
MFD 90	
Weight	29,5 Kg
Shank size	22 x 108
Air consum.	4500 l/min



PN 120	
Weight	65 Kg
Shank size	R32-R38-T38
Air consum.	10000 l/min



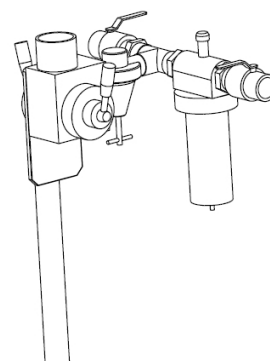
# SPEEDY DRILL 180 PNEUMATIC



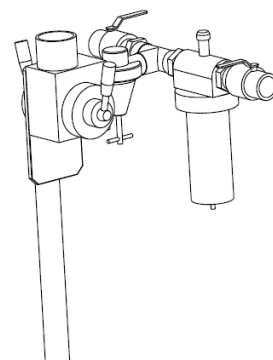
## ACCESSORIES:

### CONTROL PANELS

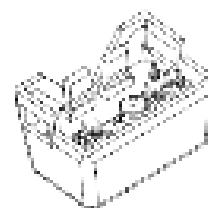
Fix control panel with two distributors, one regulator for feed control and line lubricator,  
without high pressure regulator



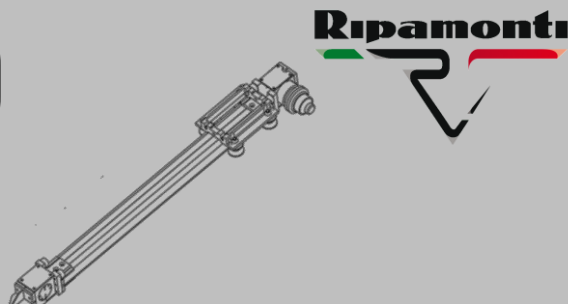
Fix control panel with two distributors, one regulator for feed control and line lubricator, with high pressure regulator



Pneumatic remote control 12 or 24 Volt complete of valves



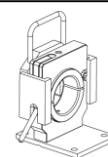
# SPEEDY DRILL 180 PNEUMATIC



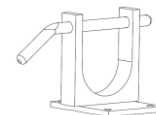
## ACCESSORIES:

### CENTRALIZERS

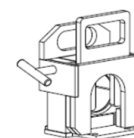
Centralizer with disassembly tool for DTH 2",3",



U type centralizer for diam.114mm



Centralizer HD with disassembly tool for DTH 2",3",4"



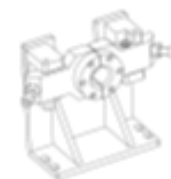
Integral drill steel centralizer 7/8"

Integral drill steel centralizer 1"

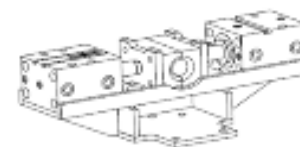
Rod centralizer 1.1/4"



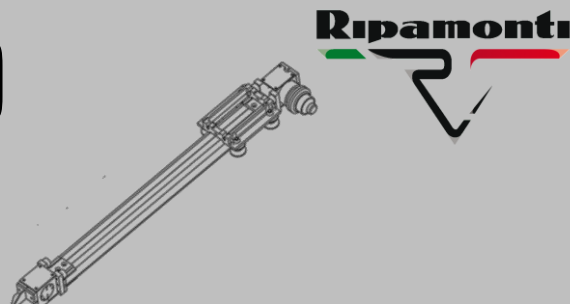
Opening centralizer for rods R25, R32, R38



Pneumatic centralizer for R25, R32, R38 including valve for control panel

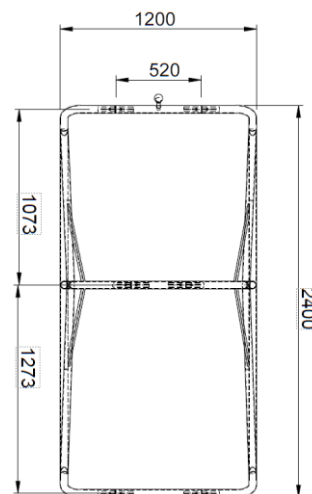
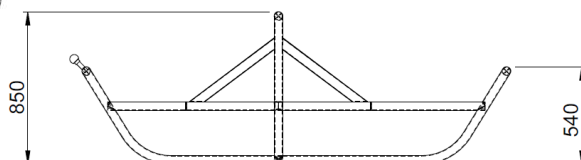
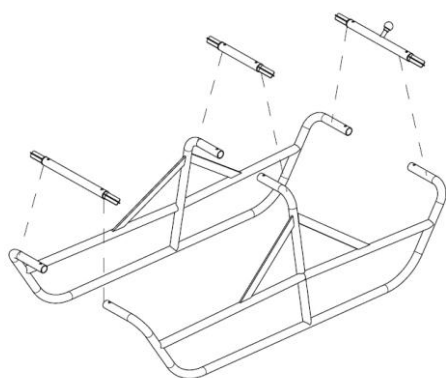


# SPEEDY DRILL 180 PNEUMATIC



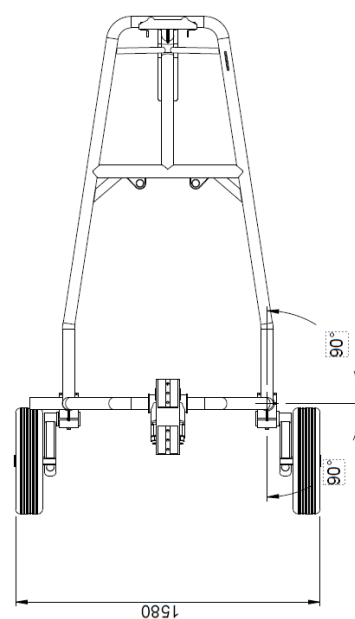
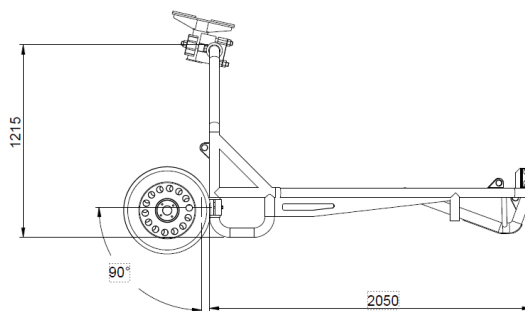
## ACCESSORIES:

### - Tubular skid frame dismountable version



**Weight: 60 Kg**

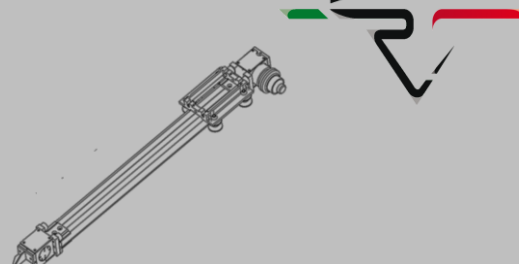
### - Complete acrobatic sledge with rotation pivot and 2 orientable wheels



**Weight: 160 Kg**

# SPEEDY DRILL 180 HYDRAULIC

Ripamonti



MODEL	STROKE(mm)	PULL BACK (Kg)	MAST LENGHT (mm)	WEIGHT (Kg)
SDI/1300	1.300	1.500	2.300	75
SDI/1800	1.800	1.500	2.800	82
SDI/2300	2.300	1.500	3.300	89
SDI/2800	2.800	1.500	3.800	96

## ROTARY HEADS

RP100	
Weight	16 Kg
Oil flow	40 l/min
Torque 140 bar	15,7-7,8 daNm
R.P.M.	390-780
Shank size	1' 1/4UNC

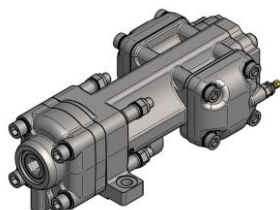
RP200/500	
Weight	16 Kg
Oil flow	40 l/min
Torque 140 bar	15,7-7,8 daNm
R.P.M.	390-780
Shank size	1' 1/4UNC

RP200/800	
Weight	16 Kg
Oil flow	40 l/min
Torque 140 bar	15,7-7,8 daNm
R.P.M.	390-780
Shank size	1' 1/4UNC

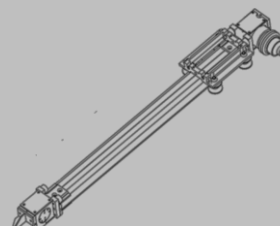


## DRIFTERS

Doofer 430X / 530X	
Weight	41 Kg
Shank size	7/8" 1"
Oil flow	45 L/min



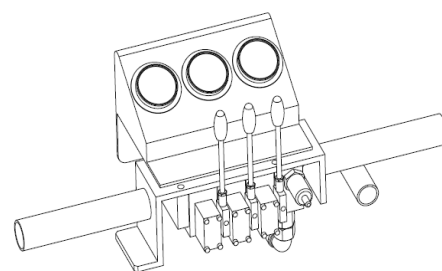
# SPEEDY DRILL 180 HYDRAULIC



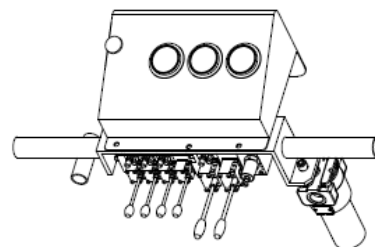
## ACCESSORIES

### CONTROL PANELS

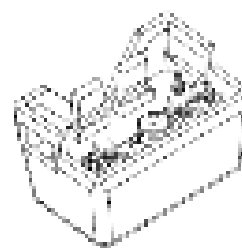
Manual control panel composed by three Hawe proportional distributors (rotation, feed, free), feed regulator, line lubricator (1 lt.), manual air valve and high-pressure filter including mt. 4 of connection hoses to mast



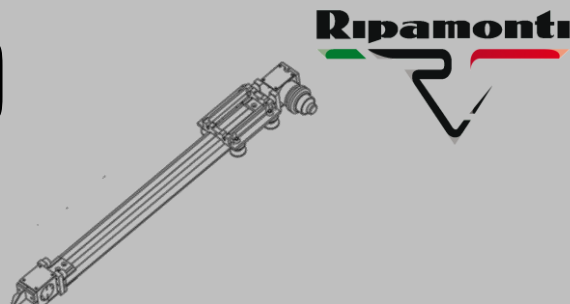
Manual control panel composed by six Hawe proportional distributors (rotation, percussion, feed, free, free, free), feed regulator, line lubricator (1 lt.), manual air valve and high pressure filter including mt. 4 of connection hoses to mast



Radio remote control with proportional controls for rotation and feed with air valve opening and start of engine. 20 mt. safety cable



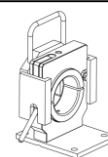
# SPEEDY DRILL 180 HYDRAULIC



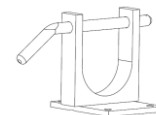
## ACCESSORIES:

### CENTRALIZERS

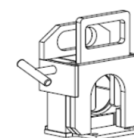
Centralizer with disassembly tool for DTH 2",3",



U type centralizer for diam.114mm



Centralizer HD with disassembly tool for DTH 2",3",4"



Integral drill steel centralizer 7/8"

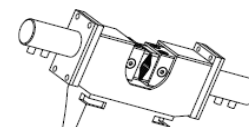
Integral drill steel centralizer 1"

Rod centralizer 1.1/4"

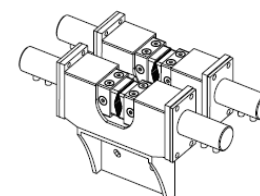


Single clamp with extra valve

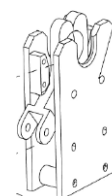
25-90mm, 50-152mm



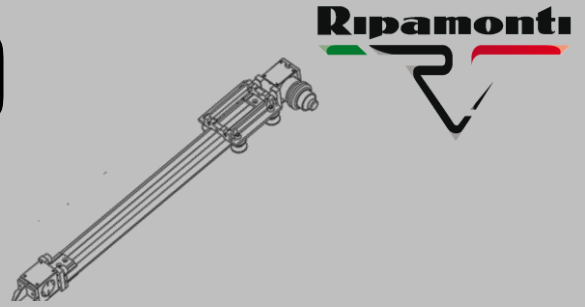
Clamping and breaking device 25-90 with extra valves



Hydraulic centralizer for rods R25 or R32

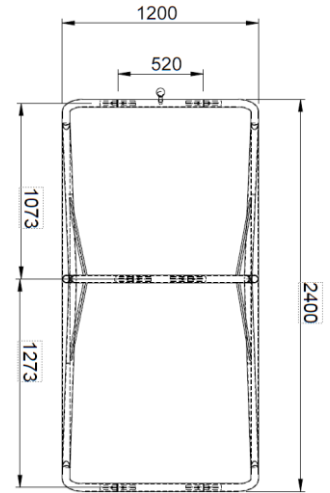
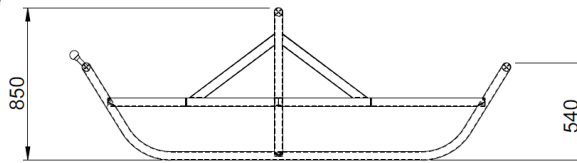
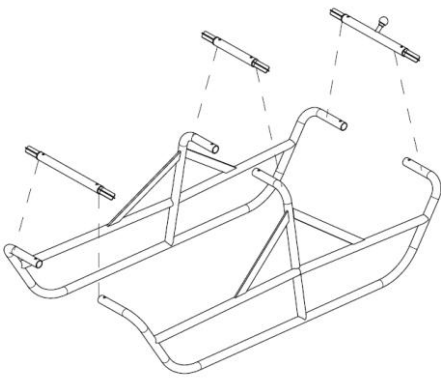


# SPEEDY DRILL 180 HYDRAULIC



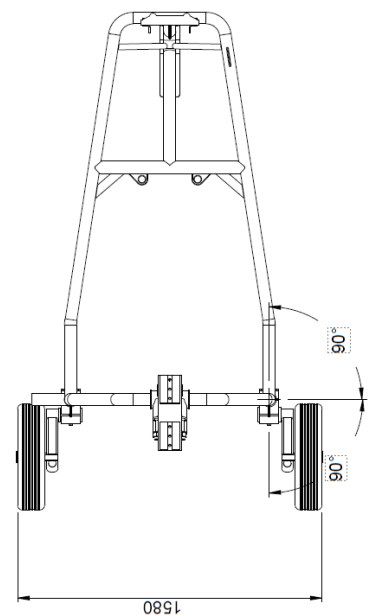
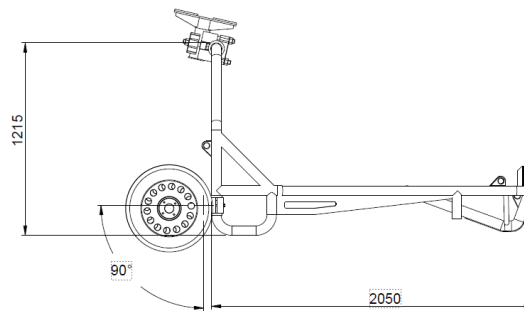
## ACCESSORIES:

### - Tubular skid frame dismountable version



**Weight: 60 Kg**

### - Complete acrobatic sledge with rotation pivot and 2 orientable wheels



**Weight: 160 Kg**